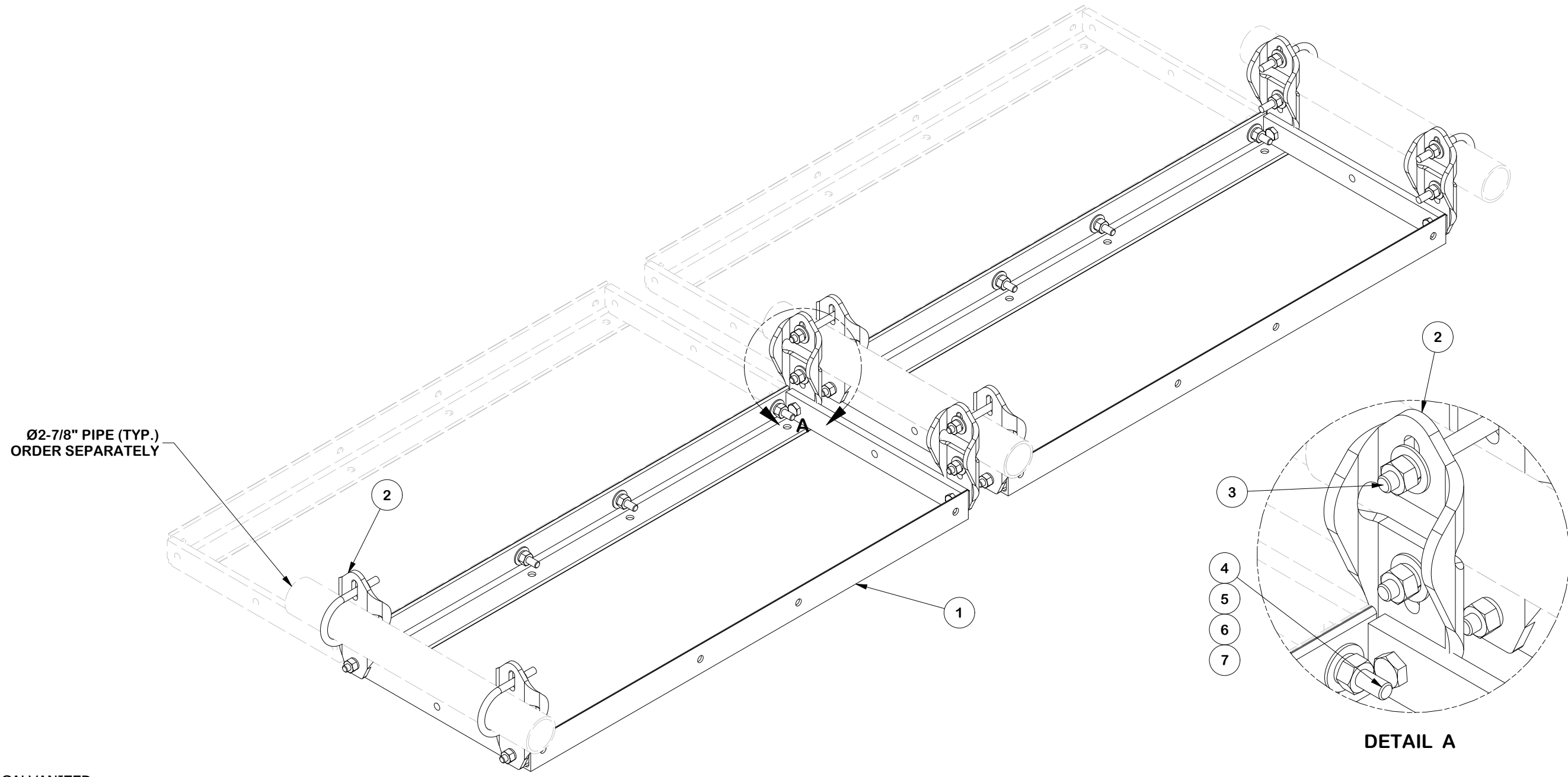


| PARTS LIST | | | | | | |
|-------------|-----|----------|--|----------|----------|---------|
| ITEM | QTY | PART NO. | PART DESCRIPTION | LENGTH | UNIT WT. | NET WT. |
| 1 | 2 | X-251012 | BALLAST TRAY WELDMENT - SITE PRO 1 | | 36.58 | 73.16 |
| 2 | 8 | CSRT-PCB | CSRT PIPE CLAMP BRACKET KIT | | 4.25 | 33.96 |
| 3 | 4 | G12045 | 1/2" x 4.5" HDG HEX BOLT GR5 FULL THREAD | 4 1/2 in | 0.30 | 1.19 |
| 4 | 8 | G1202 | 1/2" x 2" HDG HEX BOLT GR5 | 2 in | 0.18 | 1.41 |
| 5 | 8 | G12FW | 1/2" HDG USS FLATWASHER | 3/32 in | 0.03 | 0.27 |
| 6 | 8 | G12LW | 1/2" HDG LOCKWASHER | 1/8 in | 0.01 | 0.11 |
| 7 | 8 | G12NUT | 1/2" HDG HEAVY 2H HEX NUT | 7/8 in | 0.07 | 0.57 |
| TOTAL WT. # | | | | | | 110.57 |



FINISH:
HOT DIP GALVANIZED.

TOLERANCE NOTES

TOLERANCES ON DIMENSIONS, UNLESS OTHERWISE NOTED ARE:
 SAWED, SHEARED AND GAS CUT EDGES ($\pm 0.030"$)
 DRILLED AND GAS CUT HOLES ($\pm 0.030"$) - NO CONING OF HOLES
 LASER CUT EDGES AND HOLES ($\pm 0.010"$) - NO CONING OF HOLES
 BENDS AND ANGLES ARE $\pm 1/2$ DEGREE
 ALL OTHER MACHINING ($\pm 0.030"$)
 ALL OTHER ASSEMBLY ($\pm 0.060"$)

PATENT INFORMATION: WWW.SITEPRO1.COM/PATENTS

PROPRIETARY NOTE:
 THE DATA AND TECHNIQUES CONTAINED IN THIS DRAWING ARE PROPRIETARY INFORMATION OF VALMONT INDUSTRIES AND CONSIDERED A TRADE SECRET. ANY USE OR DISCLOSURE WITHOUT THE CONSENT OF VALMONT INDUSTRIES IS STRICTLY PROHIBITED.

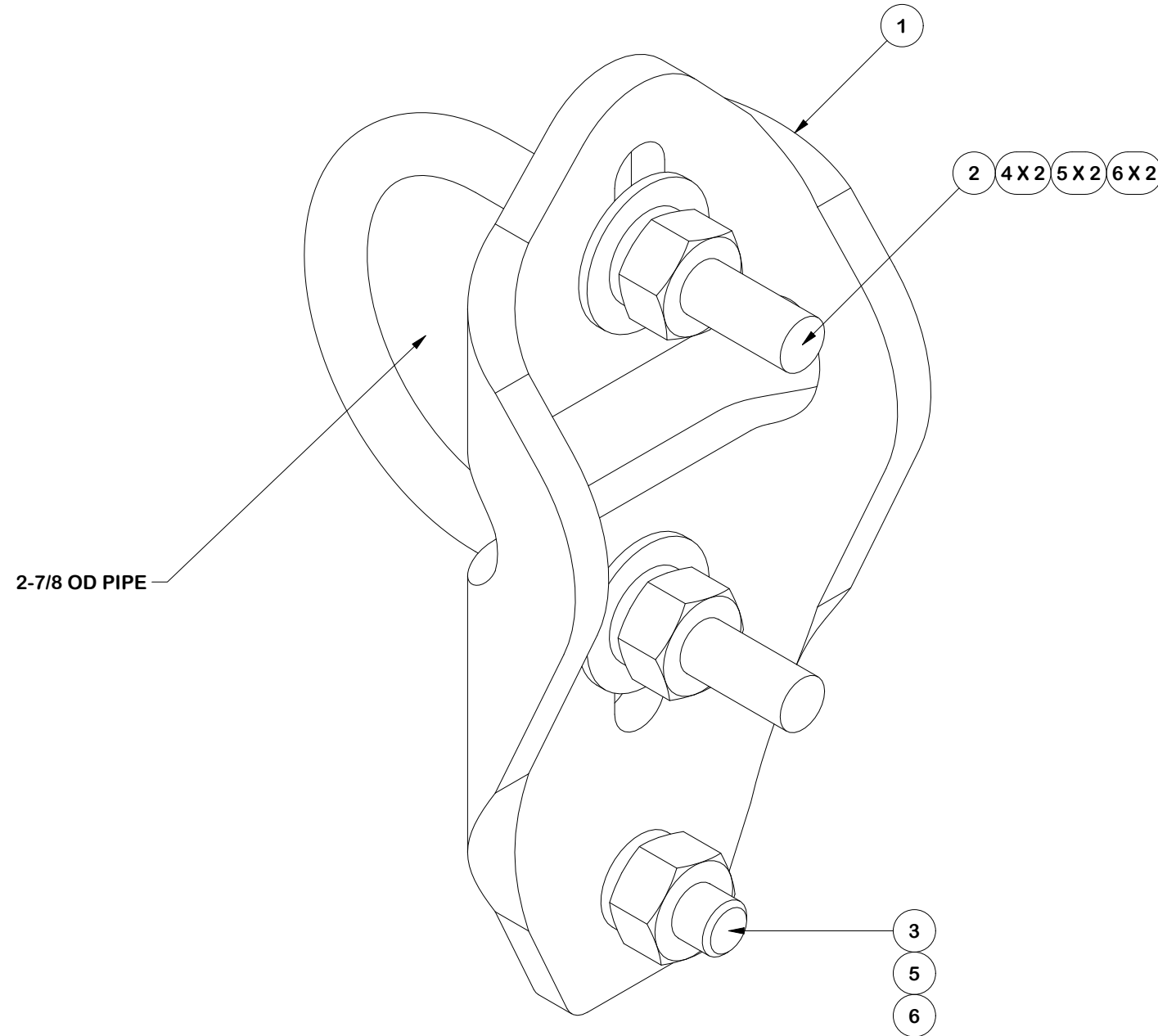
DESCRIPTION
**CSRT™ 8' WIDE 4' TRAY X 2
 W / ATTACHMENT HARDWARE**

SITE PRO 1
 Engineering Support Team:
 sp1engineering@valmont.com
 A valmont COMPANY

| | | |
|-------------------------------------|-----------------------------------|------------------------------------|
| CPD NO. NCS | DRAWN BY SDR 12/10/2025 | ENG. APPROVAL 12/18/2025 |
| CLASS 87 | SUB 02 | DRAWING USAGE CUSTOMER |
| CHECKED BY JET 12/18/2025 | | |

| | |
|------------------------------|-----------------------|
| PART NO. CSRT-8-4T | PAGE 1 OF 2 |
| DWG. NO. CSRT-8-4T | |

| PARTS LIST | | | | | | |
|------------|-----|------------|---------------------------------|---------|-------------|---------|
| ITEM | QTY | PART NO. | PART DESCRIPTION | LENGTH | UNIT WT. | NET WT. |
| 1 | 1 | X-CSRT-PCB | PIPE CONNECTION BRACKET | 12 in | 3.01 | 3.01 |
| 2 | 1 | X-UB1300 | 1/2" X 3" X 5" X 2" GALV U-BOLT | | 0.74 | 0.74 |
| 3 | 1 | G1202 | 1/2" x 2" HDG HEX BOLT GR5 | 2 in | 0.18 | 0.18 |
| 4 | 2 | G12FW | 1/2" HDG USS FLATWASHER | 3/32 in | 0.03 | 0.07 |
| 5 | 3 | G12LW | 1/2" HDG LOCKWASHER | 1/8 in | 0.01 | 0.04 |
| 6 | 3 | G12NUT | 1/2" HDG HEAVY 2H HEX NUT | 7/8 in | 0.07 | 0.21 |
| | | | | | TOTAL WT. # | 4.25 |



FINISH:
HOT DIP GALVANIZED.

TOLERANCE NOTES

TOLERANCES ON DIMENSIONS, UNLESS OTHERWISE NOTED ARE:
 SAWED, SHEARED AND GAS CUT EDGES ($\pm 0.030"$)
 DRILLED AND GAS CUT HOLES ($\pm 0.030"$) - NO CONING OF HOLES
 LASER CUT EDGES AND HOLES ($\pm 0.010"$) - NO CONING OF HOLES
 BENDS AND ANGLES ARE $\pm 1/2$ DEGREE
 ALL OTHER MACHINING ($\pm 0.030"$)
 ALL OTHER ASSEMBLY ($\pm 0.060"$)

PATENT INFORMATION: WWW.SITEPRO1.COM/PATENTS

PROPRIETARY NOTE:
 THE DATA AND TECHNIQUES CONTAINED IN THIS DRAWING ARE PROPRIETARY INFORMATION OF VALMONT INDUSTRIES AND CONSIDERED A TRADE SECRET. ANY USE OR DISCLOSURE WITHOUT THE CONSENT OF VALMONT INDUSTRIES IS STRICTLY PROHIBITED.

DESCRIPTION
**CSRT™ 8' WIDE 4' TRAY X 2
 W / ATTACHMENT HARDWARE**

SITE PRO 1
 A valmont COMPANY
 Engineering Support Team:
 sp1engineering@valmont.com

| | | |
|-------------------------------------|-----------------------------------|------------------------------------|
| CPD NO. NCS | DRAWN BY SDR 12/10/2025 | ENG. APPROVAL 12/18/2025 |
| CLASS 87 | SUB 02 | DRAWING USAGE CUSTOMER |
| CHECKED BY JET 12/18/2025 | | |

| | |
|------------------------------|-----------------------|
| PART NO. CSRT-PCB | PAGE 2 OF 2 |
| DWG. NO. CSRT-8-4T | |